

TRAFFIC DATA:
 DESIGN SPEED: 25 MPH
 AADT: 2,284 (2022)
 5% COMMERCIAL
 FUTURE AADT: 2,780 (2042)
 5% COMMERCIAL

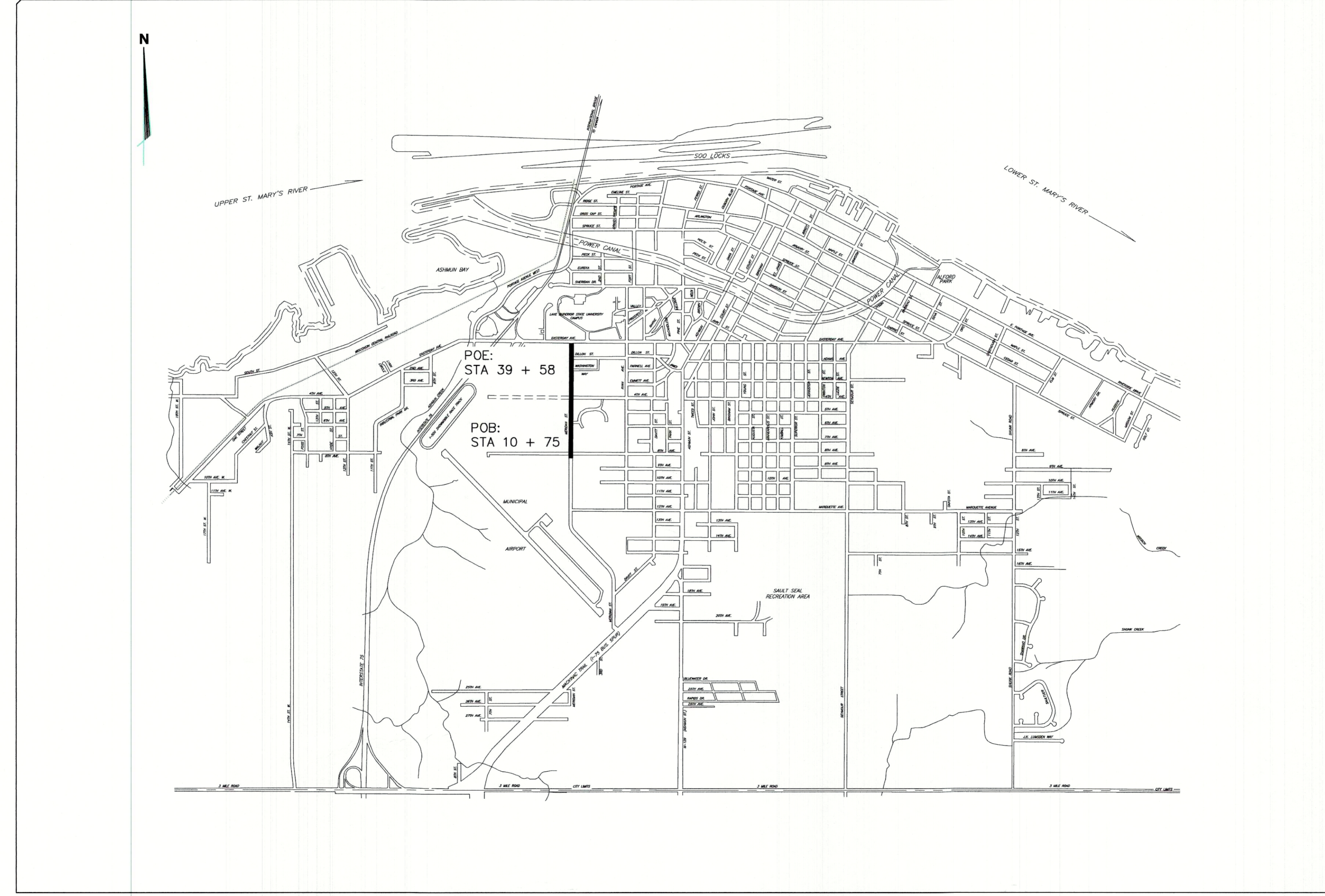
THE IMPROVEMENTS COVERED BY THESE PLANS ARE IN ACCORDANCE WITH SECTION B "NEW CONSTRUCTION/RECONSTRUCTION (4R OF THE) "MICHIGAN DEPARTMENT OF TRANSPORTATION LOCAL AGENCY PROGRAMS GUIDELINES FOR GEOMETRICS ON LOCAL AGENCY PROJECTS, 2017 EDITION AND IN 2012 AASHTO GUIDE FOR THE DEVELOPMENT OF BICYCLE FACILITIES."

THE IMPROVEMENTS COVERED BY THESE PLANS SHALL BE CONSTRUCTED IN ACCORDANCE WITH THE MICHIGAN DEPARTMENT OF TRANSPORTATION 2020 STANDARD SPECIFICATIONS FOR CONSTRUCTION AS AMENDED BY SUPPLEMENTAL SPECIFICATIONS AND SPECIAL PROVISIONS

PLAN SHEETS

- 01 COVER
- 02 NOTES
- 03-04 DETAILS
- 05-06 LEGEND
- 07-09 CROSS SECTIONS
- 10 MISC. DETAILS
- 11-19 REMOVALS, PLAN AND PROFILE
- 20 4TH AVENUE SANITARY SEWER
- 21-23 STREET APPROACH PLAN & PROFILE
- 24 DETAILS WEST EASTERDAY AVENUE INTERSECTION
- 25 INTERSECTION DETAILS
- 26-28 BIKE PATH PLAN AND PROFILE
- 29 PERMANENT PAVEMENT MARKINGS
- 30-32 PERMANENT SIGNAGE
- 33-34 MAINTAINING OF TRAFFIC
- 35 SOIL BORINGS

CITY OF SAULT STE. MARIE, MICHIGAN
 IN COOPERATION WITH THE
 MICHIGAN DEPARTMENT OF TRANSPORTATION
 AND THE FEDERAL HIGHWAY ADMINISTRATION
 PLANS FOR IMPROVEMENTS
 MERIDIAN STREET RECONSTRUCTION:
 WEST EASTERDAY AVE TO WEST 8TH AVENUE
 JN: 208179 CS: STU 17000

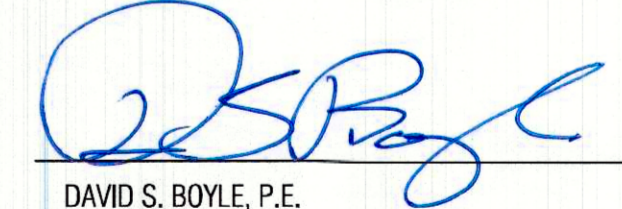


LOCATION MAP: NO SCALE



**CITY OF SAULT STE. MARIE, MI
 ENGINEERING DEPARTMENT**
 225 EAST PORTAGE AVENUE
 SAULT STE. MARIE, MI 49783
 (906) 632-5700 FAX: (906) 635-5606

CONTRACT FOR:
 RECONSTRUCTION OF MERIDIAN STREET BETWEEN WEST EASTERDAY AVENUE AND WEST 8TH AVENUE, INCLUDING CONCRETE CURB AND GUTTER, HMA SURFACE, DRIVEWAY APPROACHES, DRAINAGE STRUCTURES, STORM SEWER, SANITARY SEWER, LINING OF WATER MAIN, ADA COMPLIANT CURB RAMPS, AND PERMANENT TRAFFIC SIGNAGE
 CONTRACT LENGTH: 0.540 MILE (2,855 FEET)

CITY OF SAULT STE. MARIE APPROVAL

 DAVID S. BOYLE, P.E.
 CITY ENGINEER

PREPARED UNDER SUPERVISION OF

 DAVID S. BOYLE, P.E.
 CITY ENGINEER



IT IS UNDERSTOOD THAT THE CONTRACTOR SHALL PERFORM ALL WORK UNDER THIS CONTRACT IN ACCORDANCE WITH ALL APPLICABLE PROFESSIONAL REGULATIONS, RULES AND STANDARDS OF THE MICHIGAN OCCUPATIONAL SAFETY AND HEALTH ACT (MOSHA), BEING ACT 154 OF THE PUBLIC ACTS OF 1974 AND AS AMENDED.